



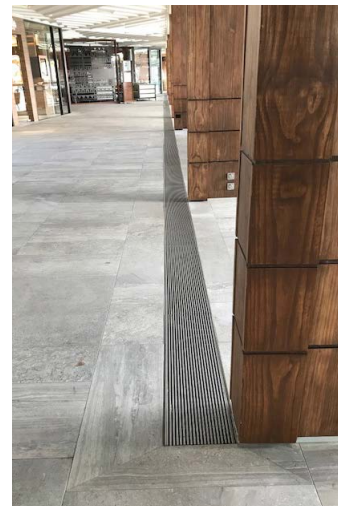
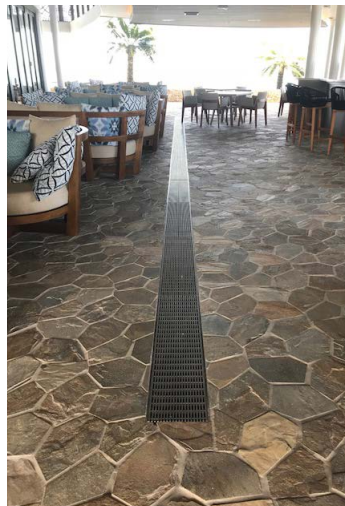
## Reference card

# MARRIOT MOMI BAY FIJI

### Marriot Momi Bay Fiji

Momi Bay Fiji is a new 5 Star resort of Marriot, which is a design build luxury resort about 25 min away from Nadi airport. It represents a blend of modern luxury accommodation and local heritage. Marriot is a franchising their name to the project investor from Fiji.

Marriott International, Inc. is an American multinational diversified hospitality company that manages and franchises a broad portfolio of hotels and related lodging facilities. As of September 23, 2016, Marriott operates 30 brands internationally. It has more than 6,000 properties in 122 countries and territories around the world, over 1.2 million rooms (as of September 2017), and additional 195,000 rooms in the development pipeline. The project itself was managed and sold through to main contractor, Kitchen Supplier, plumber and electrical contractor.



## Reference card

Project name	<b>Marriot Momi Bay Fiji</b>
Brand	<b>Marriot</b>
Investor	<b>Fiji Provident Fund - Governments superannuation fund</b>
City of installation	<b>Momi Bay</b>
Country of installation	<b>Fiji</b>
Commissioning date	<b>January 2018</b>
Country of ACO sales organisation	<b>ACO Australia</b>
Segment	<b>Commercial Kitchen</b>
Subsegment	<b>Hotels</b>

## Project information

### Project description

Unparalleled paradise awaits guests visiting the new 5 Star Marriott Resort Momi Bay in Fiji. This five-star resort is the ultimate island retreat, which features an array of luxury facilities, including a jaw-dropping infinity pool, three on-site restaurants, a fitness center and the Quan Spa, and luxurious over water bungalows. This resort also features over 3,000 square feet of indoor and outdoor event space.

## Products installed

Product name	Load class
<b>ACO Drain with 316 grade S/Steel grates and Galvanised Heelsafe DI</b>	<b>A15kN and D210kN</b>
<b>ACO Cablemate Electrical Pits and Covers</b>	<b>A15kN</b>
<b>ACO Quartz Bathroom Drainage, lineiare and tile insert channels</b>	<b>A15kN</b>
<b>ACO S/Steel Kitchen drainage</b>	<b>B80kN</b>

