



Surprising Ingredients of Healthy Kitchen

ACO Kitchen Drainage Solution



ACO commercial drainage

ACO commercial drainage design can be adapted to meet project-specific requirements and to provide the best balance between costs and performance.

ACO gully

Conventionally known as floor trap, it collects water at a single location and is available in many sizes and configurations.

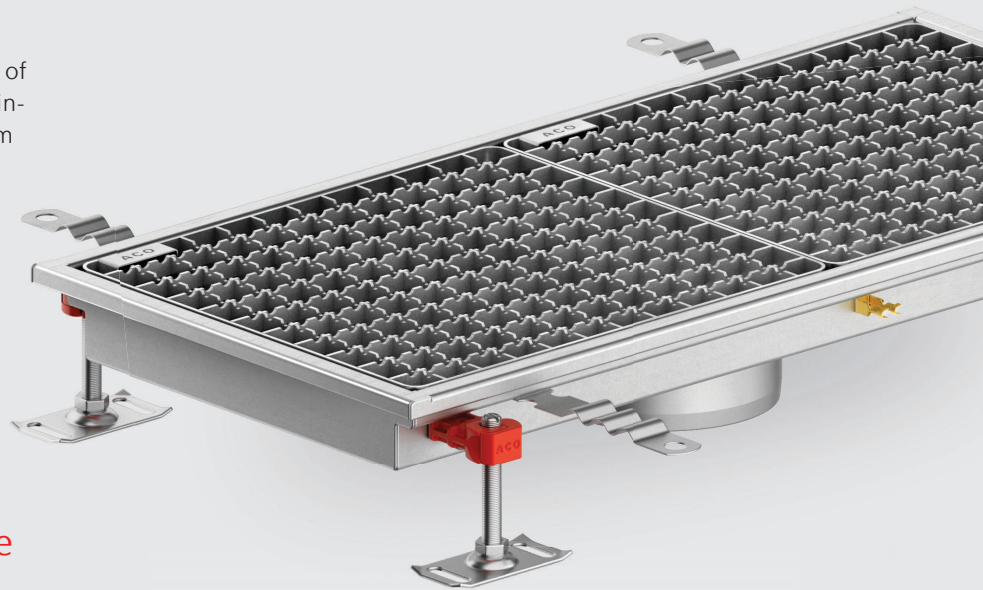
Page 10



ACO channel

Used for the rapid evacuation of surface water or for the containment of water discharged from utilities.

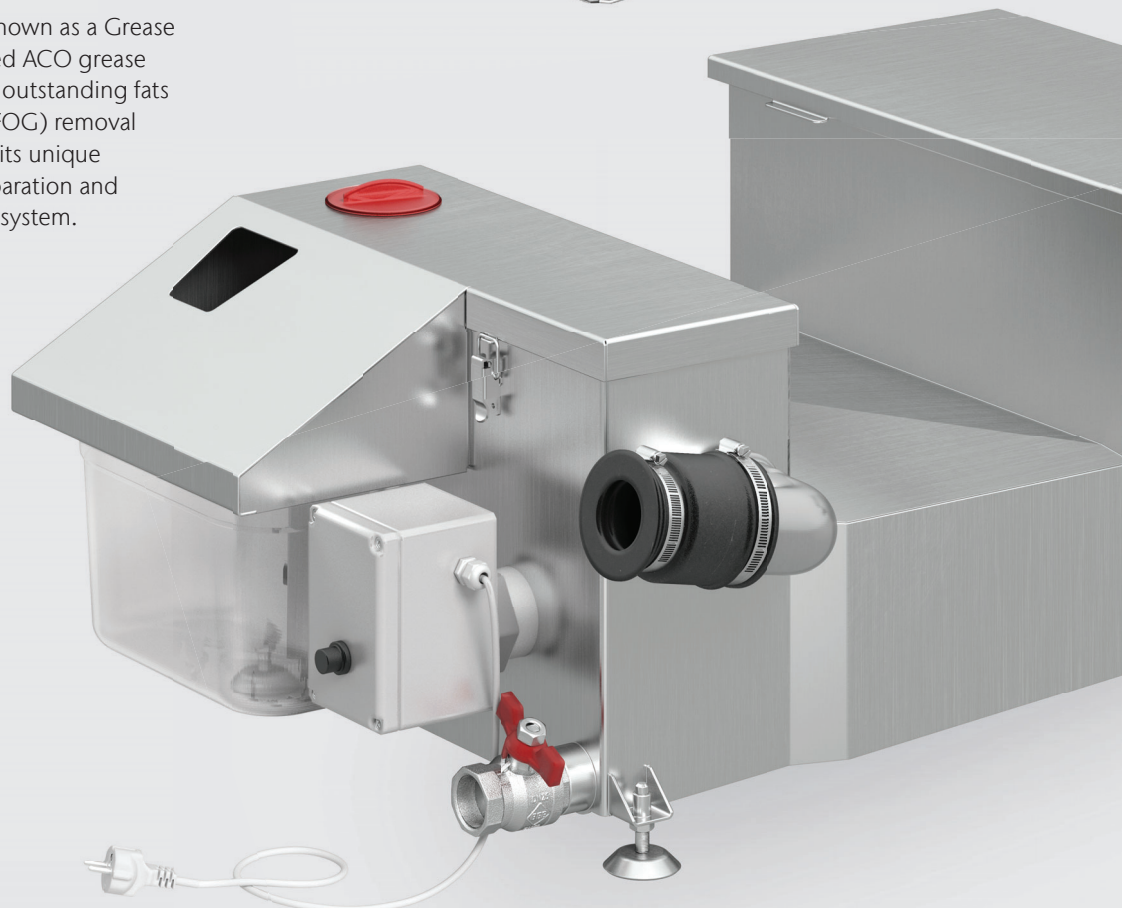
Page 12

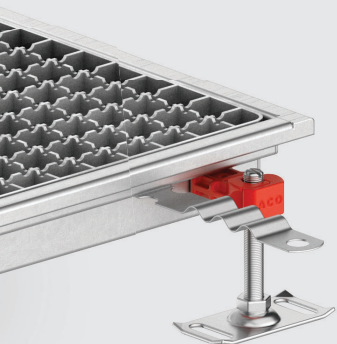
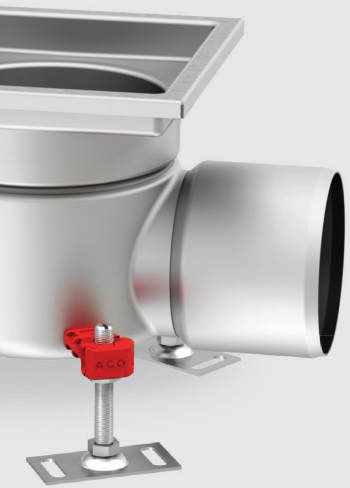


ACO grease capture

Conventionally known as a Grease trap, the advanced ACO grease capture provides outstanding fats oils and grease (FOG) removal efficiency due to its unique two chamber separation and coalescence gap system.

Page 15





Note



Any more questions?
askACO – your local
ACO team is proud to offer
experience and service

[www.aco.com/en/
products-and-services/askaco](http://www.aco.com/en/products-and-services/askaco)

ACO. we care for water

ACO Group 06

1

Wastewater management

Grease Management	06
Floor Drainage	07
Flow Rate and Retention Capacity	08
Specification and Support	09
ACO Gully	10
ACO Channel	12
ACO Gratings	14

2

ACO Grease Capture

Typical Application	15
---------------------	----

3

Introduction to ACO Pipes

ACO Pipe Portfolio	16
--------------------	----

4

References

18

5

Other ACO Products

19

For ACO Kitchen
Drainage Solution,
scan the code



ACO. we care for water

ACO is a Water-Tech company that protects water. Building on our global drainage expertise that protects people from water, we increasingly see our mission as also protecting water from people.

With the ACO WaterCycle, ACO provides systems that collect and channel, clean, retain and ultimately reuse water. In this way, ACO contributes to the preservation of clean groundwater as a vital resource, and makes a contribution to tomorrow's world. In its Agenda 2030, the UN global community set the improvement of water quality as one of 17 sustainable development goals.

Intelligent drainage systems from ACO increasingly use smart technology to ensure that rainwater and wastewater are drained, or temporarily stored. With innovative separation and filter technology, we prevent water contamination by pollutants such as fat and grease, fuels, heavy metals and microplastics.

Today, ACO goes one step further: we accept the challenge of reusing water, and thus establishing a resource-saving cycle. For all products and systems, ACO attaches great importance to durability, reusability and a low carbon footprint. The pursuit of sustainability is an ongoing process that we strive to meet every day.

The ACO Group is a global family business that is one of the world market leaders in the Water-Tech segment. Founded in Schleswig-Holstein in 1946, it operates as a transnational network in over 50 countries. Worldwide, ACO is characterised by a high level of decentralised ownership, and explicit regional market proximity.

www.aco.com



Holder
Iver and Hans-Julius Ahlmann



Headquarters of the ACO Group
in Rendsburg/Büdel Dorf



5.300

employees in more than
50 countries (Europe, North
and South America, Asia,
Australia, Africa)

40

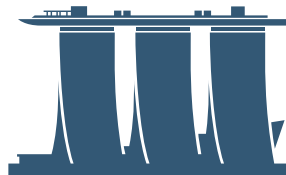
production sites
in 20 countries



ACO Malaysia

ACO Water Management Sdn Bhd.
Malaysia (1476245-1)

Adrian.Lau@aco.com
www.aco-malaysia.com



ACO Singapore

ACO Water Management Pte Ltd
(UEN202235179N)

melanie.locke@aco.com
www.aco-singapore.com



ACO Vietnam

ACO Corporation Co., Ltd

vuxuan.tran@aco.com
www.acovietnam.com

Healthy Business starts with healthy wastewater management

We believe that creating a healthy commercial kitchen starts with the specification of an effective wastewater management system which aids cleaning, optimises productivity and helps create a safe kitchen environment.

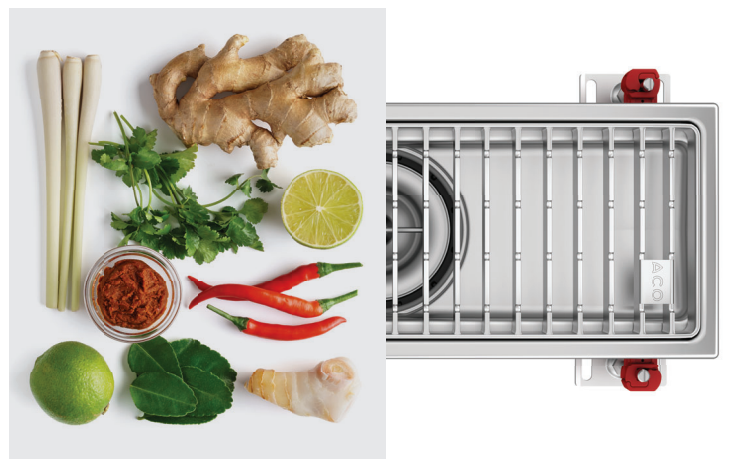
A well designed kitchen which has an effective wastewater system will benefit its customers, owners, employees and the environment in general.

ACO offers a complete range of solutions which can meet the needs of any foodservice business as well as other commercial kitchen facilities.

Grease management

The wastewater generated by commercial kitchens is rich in fats, oils and grease (FOG) and if this is discharged down the drain, it can have a negative effect on your business. The industry standard is to protect the sewer network but ACO goes further and adopts a two-phase approach which also

protects the building itself. ACO's high performance grease separators and grease removal units are specifically designed to help prevent the build-up of FOG in kitchen drainage and ultimately prevent fatbergs from forming in the main sewer network.





Floor drainage

ACO's product portfolio has been developed to provide an effective solutions which can be tailored to suit individual project-specific requirements. System components are selected to suit the composition of the flooring being used, maintenance requirements and budget.

Commercial kitchens require drainage systems that optimise cleanability, durability and flow rate in order to minimise operational costs, improve health and safety, and help ensure food safety.



Flow rate and retention capacity

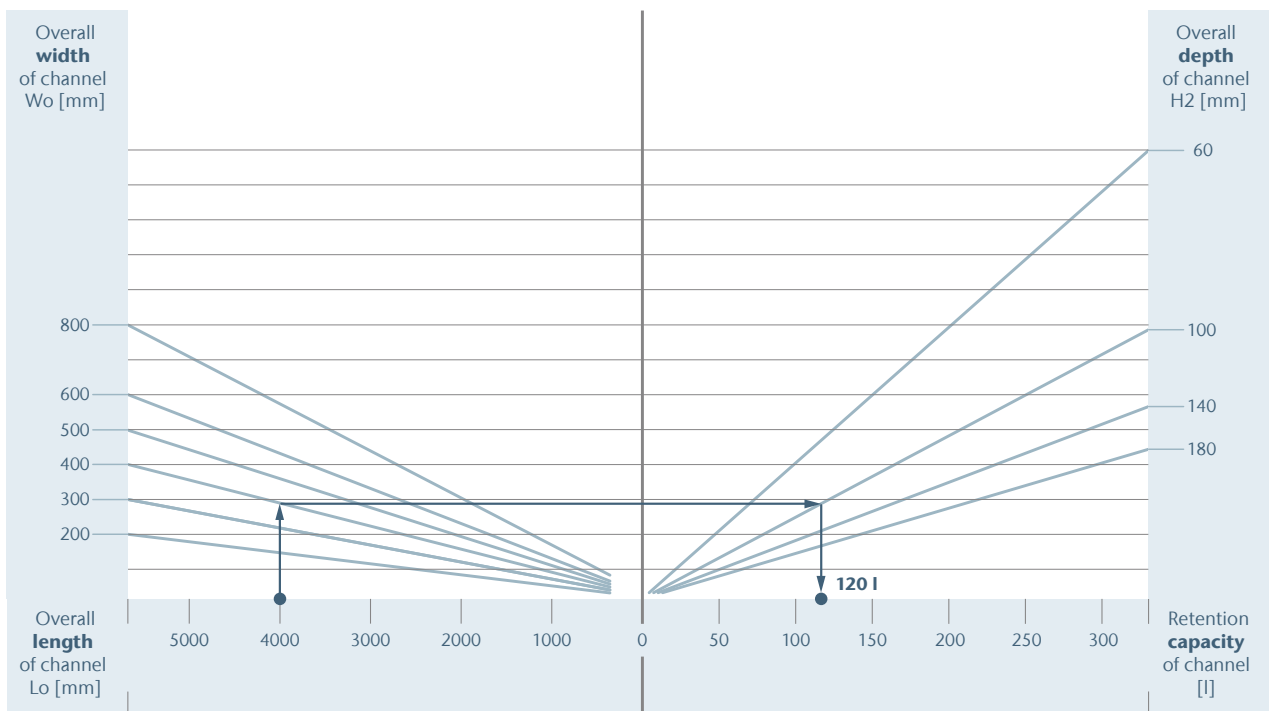
The drainage in commercial kitchens can also be specific. **Requirements for flexibility, modularity, but also speed of delivery and price are different from large-scale food industry projects.** That is why we have prepared a comprehensive portfolio of commercial gullies and channels for such applications.

Flow rate, in the context of drainage, refers to the volume of water that can pass through a drainage system per unit of time, often measured in liters or gallons per minute.

It's an important factor in designing drainage systems as it affects how quickly water can be removed from an area.

Retention capacity refers to the maximum volume of water a drainage or water retention system can hold at a given time. In drainage systems like retention basins or rainwater tanks, it's crucial in managing water runoff, preventing flooding and supporting water conservation.

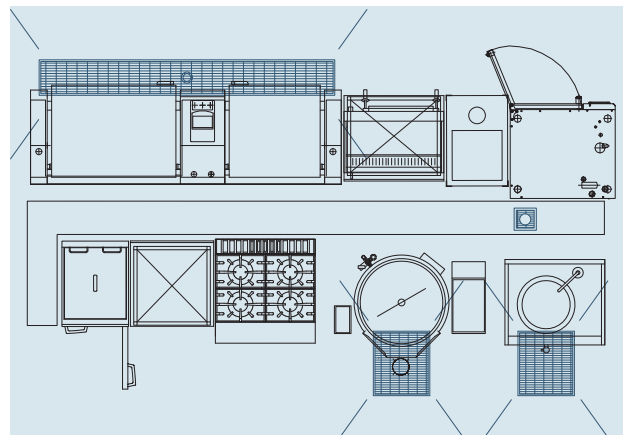
Depending on the application, the appropriate retention capacity should be considered.



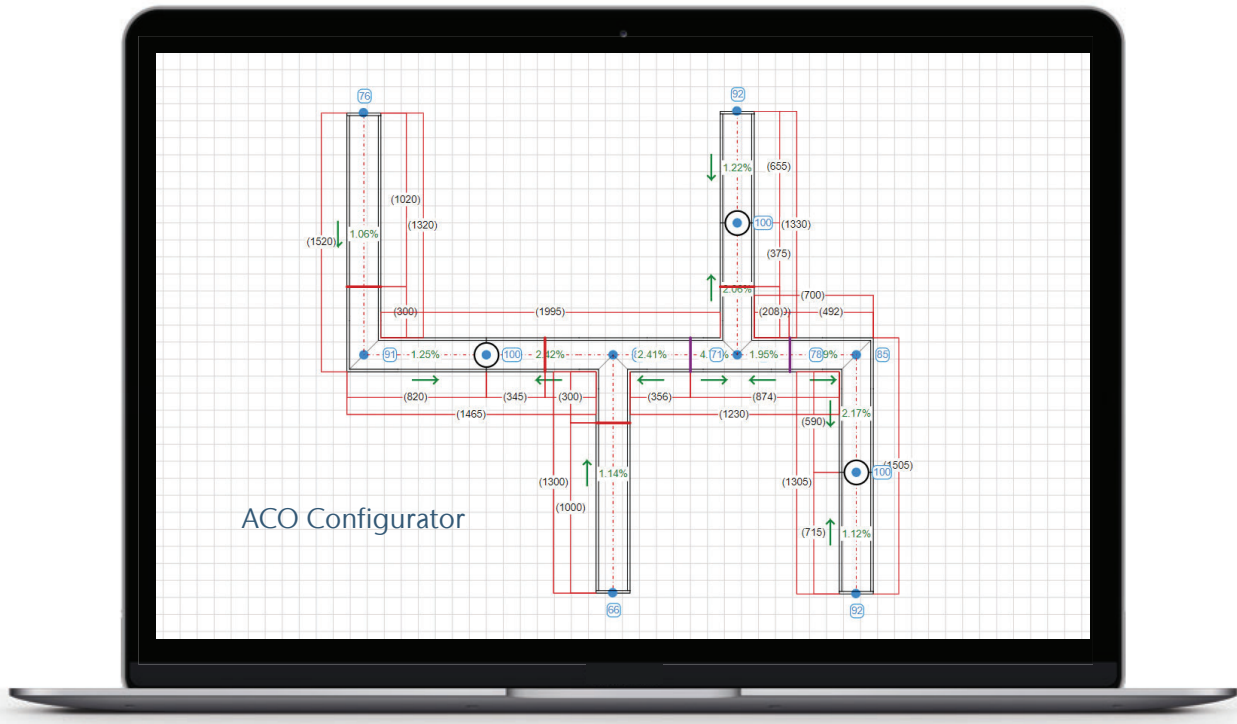
Example: channel length 4000mm, width 400mm, depth 100mm, retention capacity 120 l.

The strategic positioning of floor drainage is crucial to facilitate cleaning and aid in the removal of water that is being produced or discharged from specialist cooking equipment such as Bratt Pans, Boiling Pans & Combination Ovens.

These appliances can also be used for the pouring of produce into containers so the sizing and positioning of drainage products for these appliances must be co-ordinated with the specialist designers or equipment manufacturers.



Specification and support



Are you in need of customisable ACO solutions for building drainage, surface water treatment, or surface water management? Our team of expert professionals is ready to assist you in delivering tailored solutions to meet your specific requirements.

Utilizing the power of our cutting-edge digital tools, including our proprietary red.aco software, our team can efficiently and accurately specify the right products for your needs. With our help, you can rest assured that you will receive high-quality solutions that are customized to your exact specifications.

Let our team of experts provide you with the personalized service you deserve, using our state-of-the-art technology to deliver the solutions you need, on time and on budget. Contact us today to learn more about how we can assist you with your ACO product needs.



ACO gully

ACO hygienic drainage fulfils strongest hygienic requirements to prevent harmful bacterial contamination.

We apply the relevant hygienic design principles reserved for food processing equipment EN 1672, EN ISO 14159, EHEDG document No. 8, 13, 44.

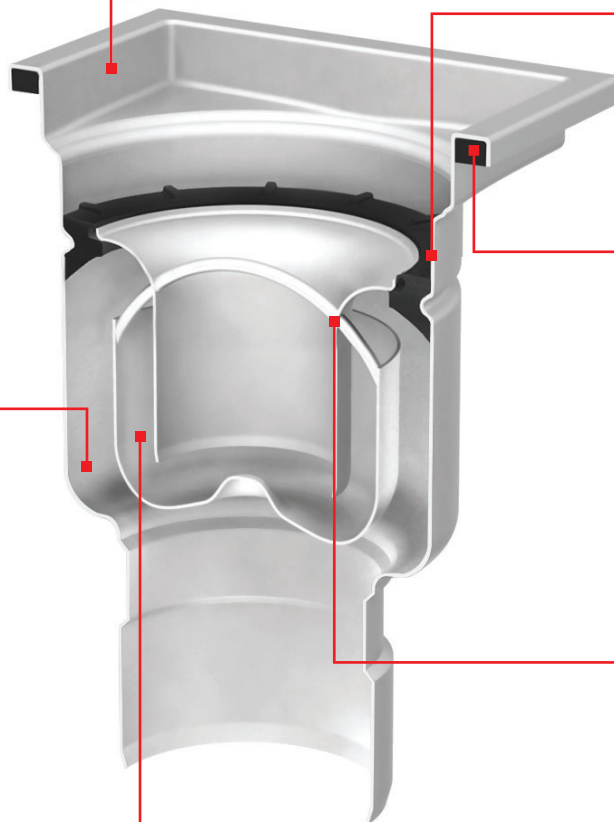
ACO gully hygienic features:

- Full drainability
- Internal radii equal or larger than 3 mm
- Hygienic joints
- Edge infill
- Stainless steel grade min. 1.4301 according to EN 10088 (304 according to AISI)
- Fully pickled and passivated

Hygienic slip resistant gratings



All internal radii equal or larger than 3 mm which greatly increases cleaning effectiveness



Hygienic joints: deep-drawn body ensures smooth contours eliminating crevices that can harbour dangerous bacteria

Edge in-fill ensures stable and durable transmission between the gully and surrounding floor and helps to minimize risk of floor cracks which could harbour microorganism

Full drainability: Dry sump design, completely drainable - eliminating stagnant water, smells, microbial growth and potential chemical hazards.

Foul air trap without overlapped joints

Foul air trap internal corners smooth and rounded

ACO gully - System overview

Product benefits

- Full drainability
- Internal radii equal or larger than 3 mm
- Hygienic joints
- Edge infill
- Stainless steel grade min. 1.4301 according to EN 10088 (304 according to AISI)
- Fully pickled and passivated

Fixed height gully assembly

- 1** Grating
- 2** Silt basket
- 3** Foul air trap
- 4** Foul air trap support ring
- 5** ACO gully body
- 6** ACO EasyFix levelling feet



	ACO gully 142	ACO gully 157	ACO gully 218
Flow rate (EN-1253)	1,4 - 1,7	2,6 - 3,5	4,4 - 6,5
Diect flow rate	1,7 - 2,1	4 - 5	4,8 - 9,5

For ACO gully portfolio dimensions and drawings, scan the code



ACO channel

ACO offers sustainable, integrated drainage systems which are designed to protect your business, the environment and ultimately public health.

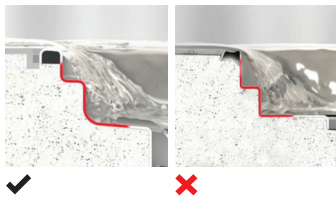
Our aim is to constantly improve every aspect of safety, hygiene and functional performance. We believe that our systems and services are truly unique, delivering unparalleled benefits to everyone involved in project delivery or subsequent operation.

ACO hygienic drainage fulfils stringent hygienic requirements to prevent harmful bacterial contamination. We apply the relevant hygienic design principles reserved for food contact surfaces EN 1672, EN ISO 14159, EHEDG document to the channel design.

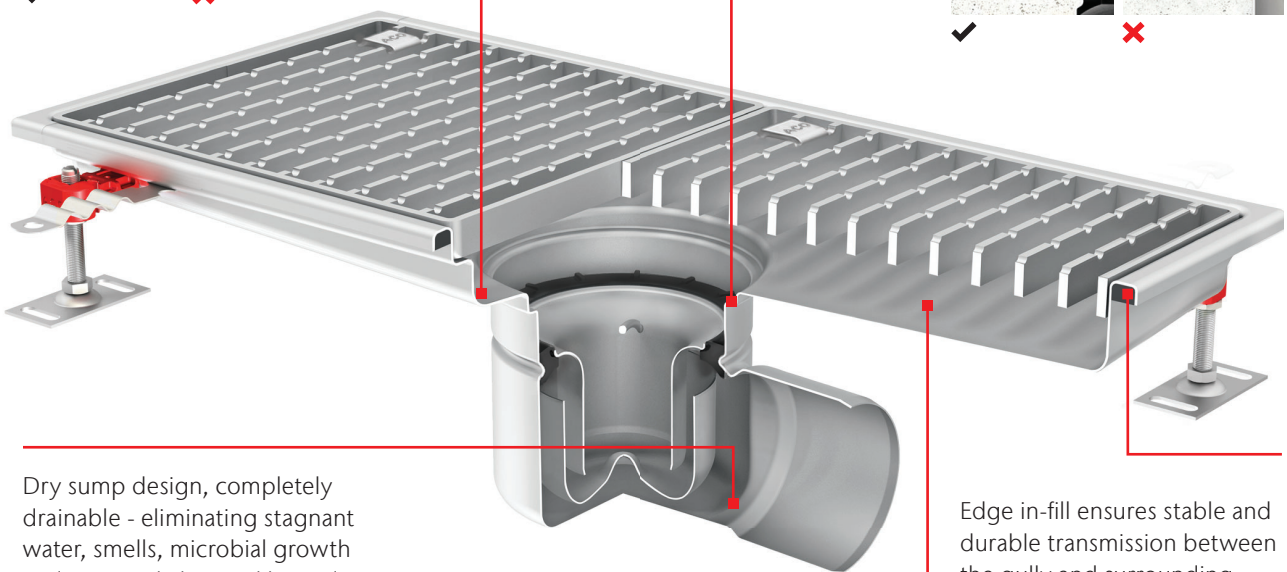
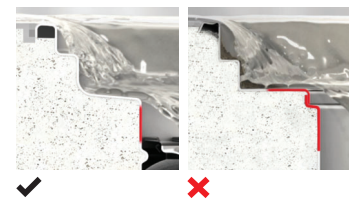
ACO channel hygienic features:

- Fully drainable
- Internal radii equal or larger than 3 mm
- Hygienic joints
- Edge infill
- Stainless steel grade min. AISI 304
- Fully pickled and passivated

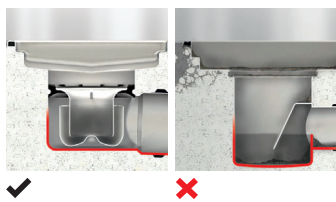
All internal radii equal or larger than 3 mm which greatly increases cleaning effectiveness



Hygienic joints: deep-drawn body ensures smooth contours eliminating crevices that can harbour dangerous bacteria

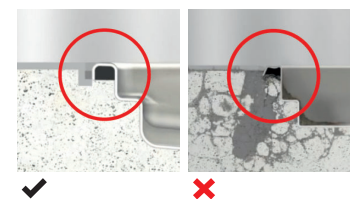


Dry sump design, completely drainable - eliminating stagnant water, smells, microbial growth and potential chemical hazards.

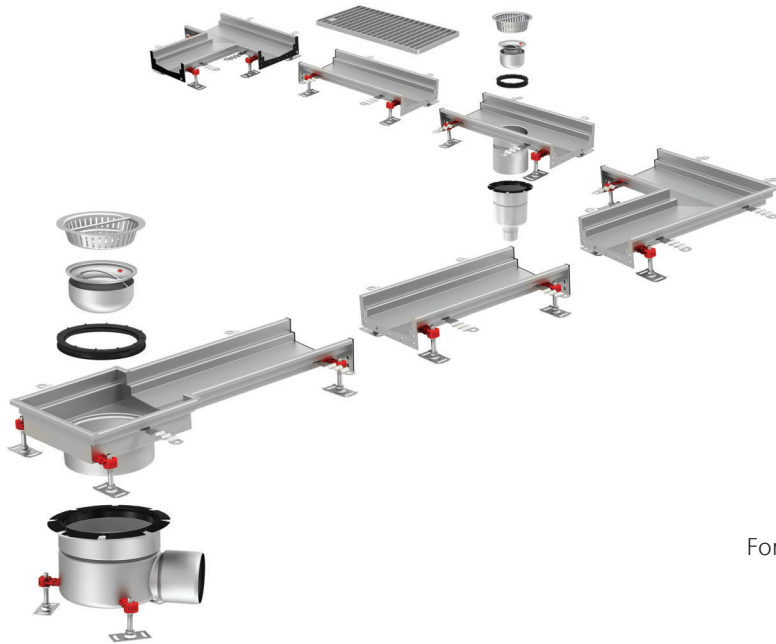


Edge in-fill ensures stable and durable transmission between the gully and surrounding floor and helps to minimise the risk of floor cracks which could harbour microorganism

Cleaning performance



ACO modular channels – System overview



Product benefits

- For all common applications and floor types
- Wide variety of system elements
- All elements are customizable
- Stock product with fast delivery time
- Easy assembly

For ACO modular channel portfolio dimensions and drawings, scan the code



ACO modular box channel 125

ACO modular box channel 200

ACO modular box channel 300

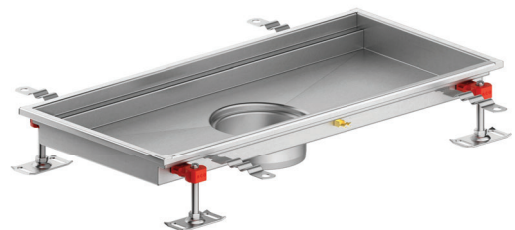
ACO modular slot channel 20



ACO commercial channels

Product benefits

- Fully compliant to EN 1253
- Full drainability to ensure hygienic cleaning
- Fully pickle passivated to restore corrosion resistance and optimum durability
- Steel thickness min 1.5 mm
- Rubber edge infill to provide additional strength in dense traffic areas
- EasyFix® clips for quick, easy and precise height adjustment during installation
- Chamfered spigot outlets provide easy push-fit connection
- ACO protective cover available
- Silt basket collects debris effectively



For ACO commercial channel portfolio dimensions and drawings, scan the code



ACO gratings

Different load class standards

ACO gullies and ACO channels are tested and specified in accordance with EN 1253 norm and the ACO modular channels are tested and specified in accordance with EN 1433 norm.

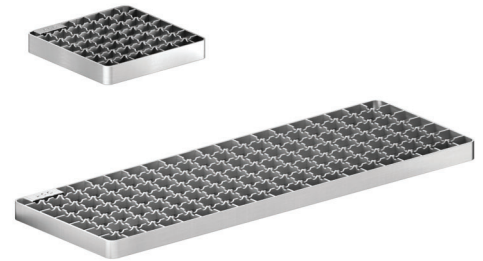
The testing method for the two norms is different; therefore the values are not directly comparable.

To assist with evaluating and comparing the two different load standards, the table below provides a simple comparison between the EN 1253 and EN 1433 load class specifications.

Mesh grating

Product benefits

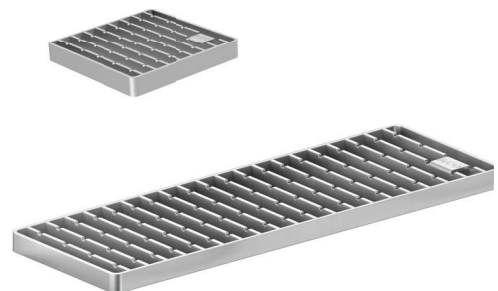
- ACO mesh grating with slip resistant finish
- Tested and certified according to EN 1253
- Range of gratings suitable to load class L 15 (EN 1253)
- Surface - electropolished
- High flow capacity of grates
- Rounded corners
- Slip resistant
 - Slip resistant low potential for slip according to BS 7976-2
 - R11 according to DIN 51130



Ladder grating

Product benefits

- Hygienic design following EN 1672, EN ISO 14159 and EHEDG document No. 8, 13, 44
- Fully pickled and passivated
- Electropolished surface
- Registered logo design allows for easy manipulation during cleaning
- Range of gratings suitable for load classes R 50, M 125 and N 250 (EN 1253)
- Tested and certified according to NSF International
- High flow capacity
- Rounded corners
- Slip resistant
 - Low potential for slip according to BS 7976-2
 - R11 according to DIN 51130



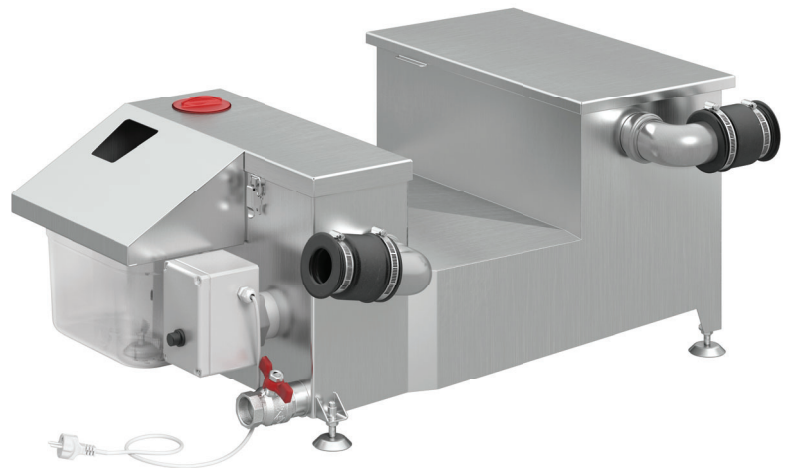
ACO Grease Capture

Commercial kitchens unintentionally dispose of food waste down the drain when using sinks, cleaning dishes or equipment. One of the main wastes are fats, oils and greases (FOG) used or produced during cooking, which frequently solidify in drains causing them to block.

If external sewers or internal draining become blocked then wastewater can't leave the kitchen resulting in foul smells and flooding. Grease separators remove FOG from wastewater, keeping the drains flowing.

Due to its compact design it can be used in food service establishments where space is limited and a larger grease separator cannot be installed.

- Product benefits
- Automatically removes fats, oils and greases from wastewater
 - High Maintenance Comfort
 - Small size unit fits under kitchen sink
 - Installed directly at the source of contamination.
 - Protects drainage system in the building



For ACO grease capture dimensions and drawings, scan the code



Typical Application

Installation in commercial kitchens with regular discharge of larger volumes of wastewater

- Restaurants
- Hotels
- Butchers
- Fast Food

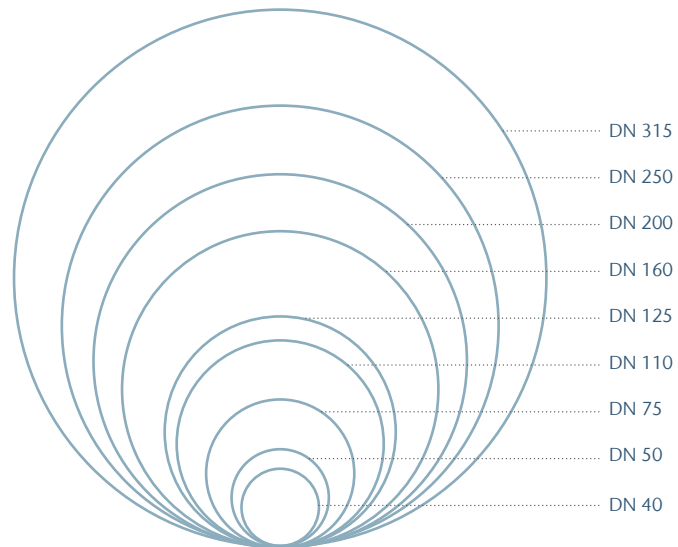


Introduction to ACO pipe

ACO pipe is reliable, lightweight and durable push-fit pipe work system, designed, produced and tested for soil, waste, rainwater and industrial wastewater drainage applications as well as for maritime waste water drainage and vacuum systems.

ACO pipe portfolio

The portfolio consists of pipes and fittings with socket and lip sealing ring included. It is available in 40, 50, 75, 110, 125, 160, 250 and 315 mm pipe diameter sizes. Straight pipes are available in lengths from 150 to 6000 mm. To see the whole portfolio, please visit the ACO building drainage online catalogue for more information



Together with the other products of ACO building drainage it creates a perfect system and offers a sustainable drainage solution with unique advantages to the customers. Especially with the ACO gully and ACO stainless steel channel systems provide a unique system for building drainage. The push-fit system ensures quick and easy assembly for a reliable

installation for gravity and vacuum drainage.

The wide range of fittings available utilizes advanced cold forming techniques, thereby reducing the manufacturing cost and minimizing the amount of welded components, to provide the ultimate in system reliability. Stainless steel pipe systems

are particularly suited to applications subject to thermal shock.

ACO pipe stainless steel pipe work systems offer all the key features found in traditional metal waste water systems but with the additional benefits unique to stainless steel material and the push-fit system.

Push-fit advantages

- Easy to assemble
- Time saving
- Cost saving
- Tight connection



ACO pipe portfolio overview

Straight pipes



Bends



Branches



Accessories



For ACO pipe dimensions and drawings, scan the code



References



Bian Li Feng, China



Home Town Chicken, China



Mandarin Oriental, Hongkong



Sitronic, Singapore



Intercontinental Ha Long Bay



Park Hyatt Phu Quoc Island

Other ACO products

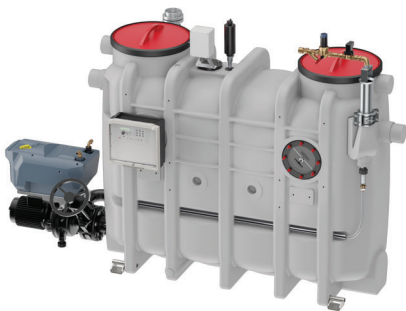


ACO vacuum drainage

ACO condensate drainage enables reliable dewatering of condensation and cleaning water during the operation of refrigerators and freezers in supermarkets - regardless of building and floor structure.

There are many benefits of ACO condensate drainage in contrast with traditional gravity drainage

- Installation independent of building and floor structure
- Ongoing supermarket operations during installation and maintenance work
- Rearrangement of refrigeration cabinets does not require re-construction of floor
- System components are always accessible
- Self-cleaning effect effectively prevents clogging
- Multiple cabinets can be connected to one collect tank



ACO grease separator, below and above ground

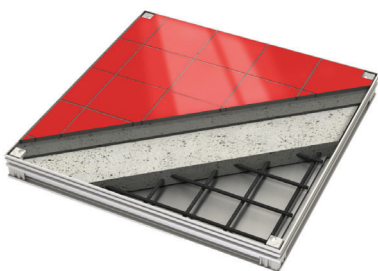
A comprehensive range addresses all size requirements within the EN 1825 specification, with performance at or beyond the Standard's requirement. Certified to EN 1825, CE marked. Separators are tested and certified according to EN 1825 and are CE marked.



ACO Access Covers

ACO Access Covers can be flexibly installed into any interior or exterior areas. Their installation and handling, as well as their maintenance and cleaning, are easy.

A wide range of standard types with many options, tailor made production and the possibility of using various floor surfaces make an ACO Access Cover look like an inconspicuous chameleon smartly merging into its background while retaining its full functionality and safety.



Every ACO product
supports the ACO WaterCycle



ACO Malaysia

ACO Water Management Sdn Bhd.
Malaysia (1476245-1)

Level 28, The Gardens South Tower,
Mid Valley City, Lingkaran Syed Putra,
59200, Kuala Lumpur,
Malaysia

Adrian.Lau@aco.com
www.buildingdrainage.aco

ACO Singapore

ACO Water Management Pte Ltd
(UEN202235179N)

2 Shenton Way, SGX Centre 1,
#18-01, Singapore 068804

melanie.locke@aco.com
www.aco-singapore.com

ACO Vietnam

ACO Corporation Co., Ltd

30-32-34 No.1 road,
Workify Office Building,
Him Lam area,
Tan Hung ward,
District 7, HCMC

vuxuan.tran@aco.com
www.acovietnam.com



ACO. we care for water

